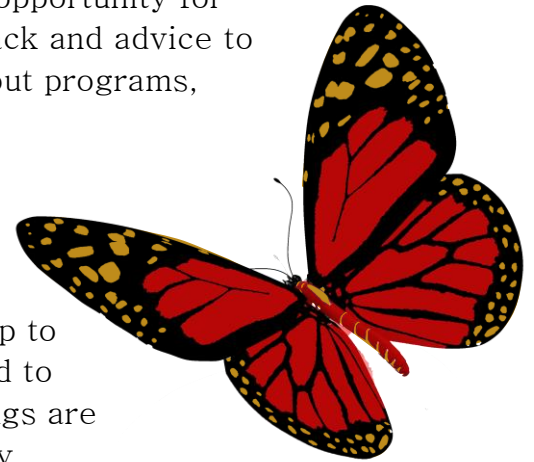


## The Family Advisory Committee at Roger Neilson House

The Family Advisory Committee (FAC) provides the opportunity for families who use Roger Neilson House to give feedback and advice to the Executive Director, leadership team and staff about programs, practices, policies and initiatives.

The committee is made up of 5-10 family members (parents, foster parents, alternate caregivers, youth, siblings) receiving palliative care and bereavement services at Roger Neilson House, and up to 2 staff members and a volunteer. Members are asked to serve 2 year terms to a maximum of 6 years. Meetings are held 6 times per year (September, November, January, March, May & June), on Mondays from 6-8 pm at Roger Neilson House.



Members are asked to reach out and listen to other families for their input and to reflect on issues and priorities that may be different from their own when giving feedback. This respectful, collaborative partnership between families and the leadership and staff of Roger Neilson House helps to ensure that the services provided meet the needs of the families served.

If you are interested in joining this important committee, please contact Roger Neilson House staff liaison, Nancy Graham ([ngraham@cheo.on.ca](mailto:ngraham@cheo.on.ca) or 613-523-6300 X 619). You will receive a formal application form which will be followed by an interview to determine your eligibility.

Additional information about the FAC may be found on the Roger Neilson House website [www.rogerneilsonhouse.ca](http://www.rogerneilsonhouse.ca).